

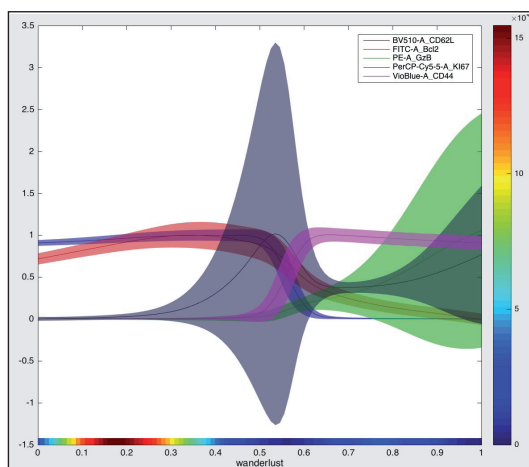
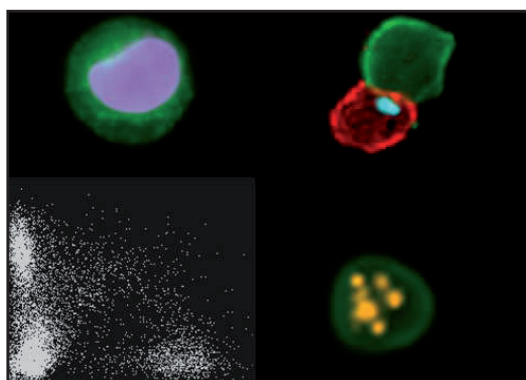
# Inserm Workshop 247

## Flow, mass, spectral cytometry and analysis tools for multiparametric data analysis

**REGISTRATION DEADLINE: June 16, 2017**

**ORGANIZERS:** Antonio COSMA (CEA, Fontenay-aux-Roses), Hervé LUCHE (CIPHE, Marseille), Jacqueline MARVEL (SFR BioSciences, Lyon).

**AIMS:** Multiparameter flow, mass and image cytometry imply mastering new tools to first analyze datasets in order to identify statistically different changes, but also visualize efficiently the results. State of the art lectures on these sampling methods and data analysis pipelines will be presented for illustration.



● ● ● **PHASE I – CRITICAL ASSESSMENT**  
September 25-27, 2017 in Bordeaux

**STATE OF THE ART IN MULTIPARAMETER CYTOMETRY**

Pratip CHATTOPADHYAY (NIAID, USA), Evan NEWELL (SIGN, SGP), Sandrine SCHMUTZ (Institut Pasteur, FRA), Andrew FILBY (Newcastle University, GBR)

**EXAMPLE OF APPLICATION OF MULTIPARAMETER CYTOMETRY**

Tomas KALINA (Charles University, CZE), Sean HANNIFFY (CIML, FRA), Axel VILLANI (CIRI, FRA)

**STATE OF THE ART IN MULTIPARAMETRIC DATA ANALYSIS**

Christophe ARPIN (CIRI, FRA), Yvan SAEYS (VIB, BEL), Evan NEWELL (SIGN, SGP), Attila TARNOK (University of Leipzig, DEU)

**EXAMPLE OF APPLICATION OF MULTIVARIATE DATA ANALYSIS PIPELINES**

Alberto ORFAO (Universidad de Salamanca, ESP), Jonathan IRISH (Vanderbilt University, USA), Antonio COSMA (CEA, FRA)

**EMERGING TECHNOLOGIES**

Raul CATENA (UZH, CHE), Pier Federico GHERARDINI (Stanford University, USA), Christian HENNIG (Zellkraftwerk, DEU), William TELFORD (NCI-NIH, USA), Robert BALDERAS (BD Biosciences, USA)

● ● ● **PHASE II – TECHNICAL WORKSHOP**

October 2-4, 2017 - Fontenay-aux-Roses / October 9-11, 2017 - Lyon / October 17-20, 2017 - Marseille

Phase II objective is to introduce participants to fundamental and applied aspects highlighted in Phase I of the workshop. Advanced training on MIC (Multiparametric Image Cytometry) will be provided at SFR BioSciences. Practical training on multi-parameter flow, mass and spectral cytometry (respectively MFC, MMC and MSC) will be performed on one single site at CIPHE (Marseille). Finally, a training focusing on advanced data analysis pipelines will be provided at FlowCyTech (CEA, Fontenay-aux-Roses).

**SELECTION:** 8 trainees per session will be selected among phase I participants.

**Information and registration:**

Inserm - Pôle des ateliers  
101 Rue de Tolbiac  
75654 Paris Cedex 13  
Tel : +33 (0) 1 44 23 62 04 or 62 03  
Fax : +33 (0) 1 44 23 62 93  
ateliers@inserm.fr